

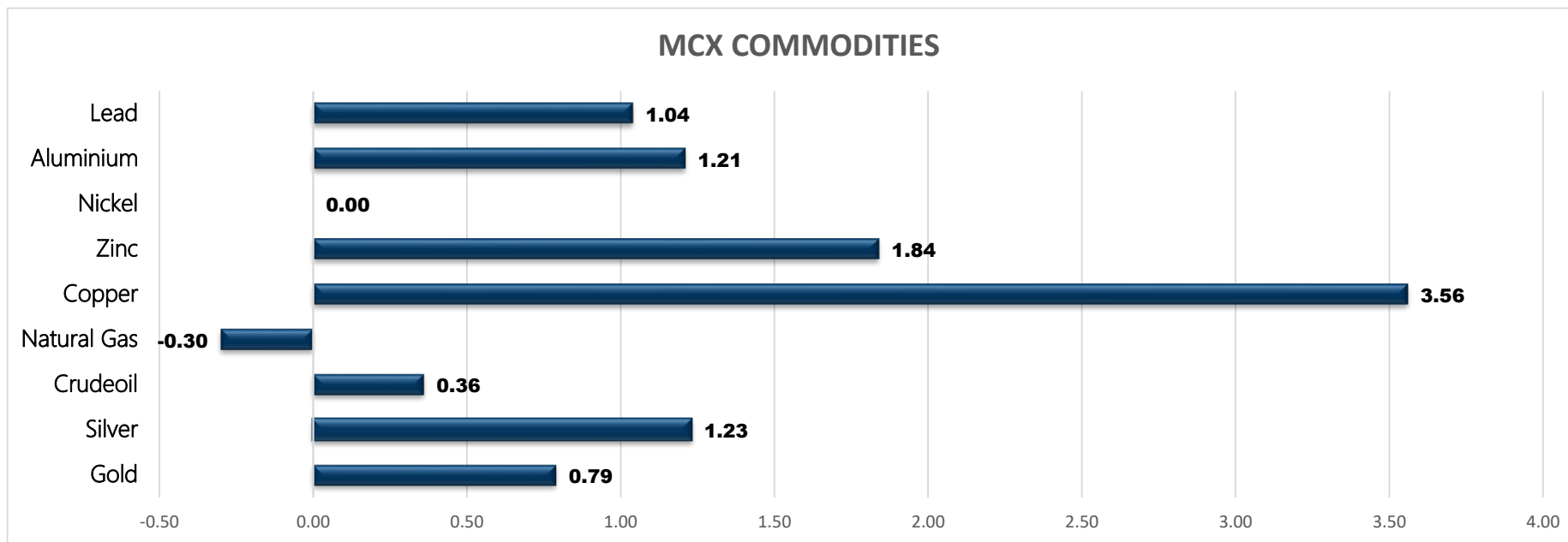


BULLION

- Gold
- Silver

Commodity	Closed	% Change	Commodity	Ltp*	% Change	Economical Data
Gold	51269.00	0.79	Gold\$	1870.05	0.14	EUR German Trade Balance
Silver	62336.00	1.23	Silver\$	22.40	0.33	EUR French Industrial Production m/m
Crudeoil	9045.00	0.36	Crudeoil\$	116.87	1.40	GBP Bank Holiday
Natural Gas	672.90	-0.30	Natural Gas\$	8.49	-2.43	EUR Spanish Services PMI
Copper	807.40	3.56	Lme Copper	9520.00	0.86	EUR Italian Services PMI
Zinc	336.90	1.84	Lme Zinc	3872.50	-1.04	EUR French Final Services PMI
Nickel	2304.00	0.00	Lme Nickel	28270.00	-0.09	EUR German Final Services PMI
Aluminium	234.05	1.21	Lme Lead	2155.00	-1.15	EUR Final Services PMI
Lead	185.45	1.04	Lme Aluminium	2724.00	-2.33	EUR Retail Sales m/m

MCX COMMODITIES



MCX MARKET SYNOPSIS

Contract	Open	High	Low	Close	Rs Chg	% Chg	Volume	OI	OI % Chg
Gold Aug	50850.00	51341.00	50783.00	51269.00	404.00	0.79	5060	14370	2.34
Gold Oct	51040.00	51565.00	51040.00	51516.00	412.00	0.81	271	531	37.56

Contract	Open	High	Low	Close	Rs Chg	% Chg	Volume	OI	OI % Chg
Silver Jul	61428.00	62435.00	61343.00	62336.00	756.00	1.23	14157	11321	-14.13
Silver Sep	62100.00	63131.00	62050.00	63013.00	746.00	1.20	708	1065	-0.19

MCX PIVOT

Contract	Sup - 3	Sup - 2	Sup - 1	Pivot	Res - 1	Res - 2	Res - 3	OI Status
Gold Aug	50363.00	50573.00	50921.00	51131.00	51479.00	51689.00	52037.00	Fresh Buying
Silver Jul	60549.00	60946.00	61641.00	62038.00	62733.00	63130.00	63825.00	Short Covering

SPREAD SYNOPSIS

Gold					Silver				Spread History				
Month	Rate	Aug	Oct	Dec	Month	Rate	Jul	Sep	Dec	Commodity	Max	Min	Avg
Aug	51269		247.00	27.00	Jul	62336		677.00	1670.00	Gold	585.00	-20.00	253.00
Oct	51516			-220.00	Sep	63013			993.00	Silver	1400.00	588.00	1060.00
Dec	51296				Dec	64006							

INTERNATIONAL MARKET SYNOPSIS

Gold Last 4 Day Movement							Pivot		
Date	Open	High	Low	Close	Chg	% Chg	Res - 1	Res - 2	Res - 3
2-Jun-22	1846.38	1870.03	1844.17	1868.25	21.86	1.18%	1877.46	1886.68	1903.32
1-Jun-22	1837.46	1849.29	1828.82	1846.39	8.94	0.49%	Sup - 1	Sup - 2	Sup - 3
31-May-22	1855.50	1856.61	1835.70	1837.45	-18.05	-0.97%	1851.60	1834.96	1825.74
30-May-22	1853.11	1863.20	1848.83	1855.50	2.41	0.13%			

Silver Last 4 Day Movement							Pivot		
Date	Open	High	Low	Close	Chg	% Chg	Res - 1	Res - 2	Res - 3
2-Jun-22	21.828	22.319	21.766	22.308	0.480	2.20%	22.50	22.68	23.05
1-Jun-22	21.542	21.944	21.439	21.828	0.283	1.32%	Sup - 1	Sup - 2	Sup - 3
31-May-22	21.930	21.990	21.510	21.545	-0.385	-1.76%	21.94	21.58	21.39
30-May-22	22.096	22.270	21.930	21.930	-0.165	-0.75%			

GOLD

Gold trading range for the day is 50573-51689.

Gold prices rose as dismal US economic data spooked investors away from the greenback.

The ADP report showed that US companies added the fewest number of jobs since the pandemic recovery began

The U.S. policymakers have signalled a 50 basis point interest rate rise this month and next, the outlook beyond that is uncertain.

The Fed already walks a tight rope as it rein in historic inflation while not causing a recession.



SILVER

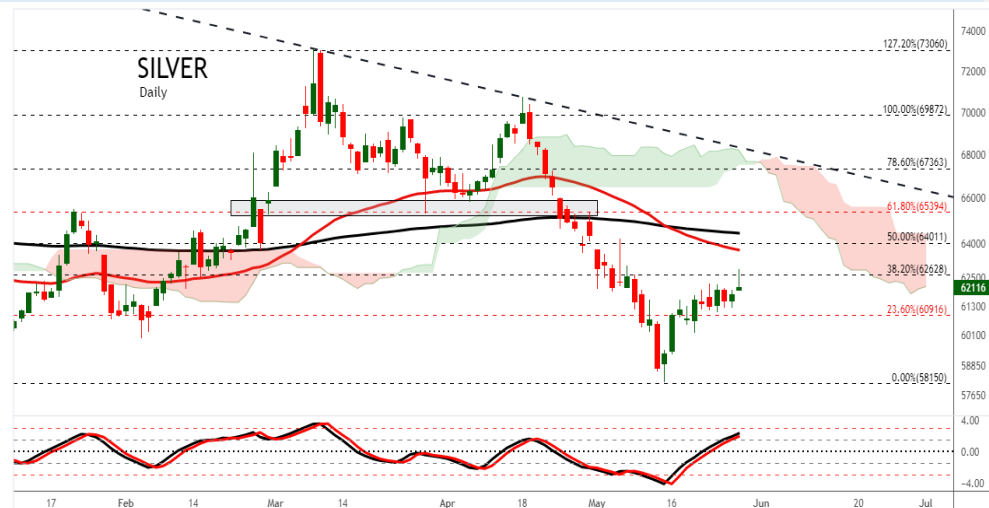
Silver trading range for the day is 60946-63130.

Silver rose as inflation and recession worries persist.

Persistent inflation remained an underlying theme supporting bullion prices, with the euro zone inflation data coming in much higher than expected.

The number of Americans filing new claims for unemployment benefits unexpectedly fell last week as demand for labor remained strong

The Fed's Beige Book showed "one district explicitly reported that the pace of job growth had slowed"



BULLION SPOT MARKET SYNOPSIS

Gold Spot 995		
Exch.	Descr.	Ltp*
CMDTY	Gold 995 - Ahmedabad	52615.00
CMDTY	Gold 995 - Bangalore	52550.00
CMDTY	Gold 995 - Chennai	52520.00
CMDTY	Gold 995 - Cochin	52525.00
CMDTY	Gold 995 - Delhi	52600.00
CMDTY	Gold 995 - Hyderabad	52500.00
CMDTY	Gold 995 - Jaipur	52500.00
CMDTY	Gold 995 - Kolkata	52585.00
CMDTY	Gold 995 - Mumbai	52580.00

* Rates including GST

Gold Spot 999		
Exch.	Descr.	Ltp*
CMDTY	Gold 999 - Ahmedabad	52745.00
CMDTY	Gold 999 - Bangalore	52700.00
CMDTY	Gold 999 - Chennai	52670.00
CMDTY	Gold 999 - Cochin	52675.00
CMDTY	Gold 999 - Delhi	52750.00
CMDTY	Gold 999 - Hyderabad	52650.00
CMDTY	Gold 999 - Jaipur	52650.00
CMDTY	Gold 999 - Mumbai	52730.00

* Rates including GST

Silver Spot 999		
Exch.	Descr.	Ltp*
CMDTY	Silver 999 - Ahmedabad	63860.00
CMDTY	Silver 999 - Bangalore	63840.00
CMDTY	Silver 999 - Chennai	63690.00
CMDTY	Silver 999 - Delhi	64015.00
CMDTY	Silver 999 - Hyderabad	63730.00
CMDTY	Silver 999 - Jaipur	63795.00
CMDTY	Silver 999 - Kolkata	64190.00
CMDTY	Silver 999 - Mumbai	64025.00

* Rates including GST

Gold and Silver Fix		
Exch.	Descr.	Ltp*
CMDTY	Gold London AM FIX	1829.70
CMDTY	Gold London PM FIX	1844.90
CMDTY	Silver London FIX	21.61

Gold and Silver Ratio		
Exch.	Descr.	Ltp*
Intl Spot	GOLD SILVER RATIO	83.47
MCX	GOLD SILVER RATIO	82.25

SPOT Vs MCX SPREAD			
Silver 999	Spread	Gold 999	Spread
Ahmedabad - Mcx Silver	1524.00	Ahmedabad - Mcx Gold	1476.00
Bangalore - Mcx Silver	1504.00	Bangalore - Mcx Gold	1431.00
Chennai - Mcx Silver	1354.00	Chennai - Mcx Gold	1401.00
Delhi - Mcx Silver	1679.00	Cochin - Mcx Gold	1406.00
Hyderabad - Mcx Silver	1394.00	Delhi - Mcx Gold	1481.00
Jaipur - Mcx Silver	1459.00	Hyderabad - Mcx Gold	1381.00
Kolkata - Mcx Silver	1854.00	Jaipur - Mcx Gold	1381.00
Mumbai - Mcx Silver	1689.00	Mumbai - Mcx Gold	1461.00

GOLD PRICE MOVEMENT SINCE 2012

Year	JAN	FEB	MAR	APR	MAY	JUN	JUL	AUG	SEP	OCT	NOV	DEC	Growth
2012	28078	27952	28518	29283	29248	29665	29749	31206	31535	31105	31076	30859	3530.00
	2.74	-0.45	2.02	2.68	-0.12	1.43	0.28	4.90	1.05	-1.36	-0.09	-0.70	12.92
2013	29871	29570	29394	26905	26874	25669	28207	35074	29874	29793	29234	28364	-2495.00
	-3.20	-1.01	-0.60	-8.47	-0.12	-4.48	9.89	24.35	-14.83	-0.27	-1.88	-2.98	-8.09
2014	29462	30090	28536	28887	26863	27776	27818	27996	26313	25881	25835	26703	-1661.00
	3.87	2.13	-5.16	1.23	-7.01	3.40	0.15	0.64	-6.01	-1.64	-0.18	3.36	-5.86
2015	27895	26477	26204	26716	26860	26471	24813	26682	25856	26499	25069	24931	-1772.00
	4.46	-5.08	-1.03	1.95	0.54	-1.45	-6.26	7.53	-3.10	2.49	-5.40	-0.55	-6.64
2016	26638	29513	28549	30266	28627	31199	31549	30724	30742	29950	28385	27445	2514.00
	6.85	10.79	-3.27	6.01	-5.42	8.98	1.12	-2.61	0.06	-2.58	-5.23	-3.31	10.08
2017	28942	29566	28463	28873	28843	28439	28557	29745	29557	29253	29012	29000	1555.00
	5.45	2.16	-3.73	1.44	-0.10	-1.40	0.41	4.16	-0.63	-1.03	-0.82	-0.04	5.67
2018	30117	30379	30408	31036	30831	30432	29653	30129	30481	31748	30240	31392	2392.00
	3.85	0.87	0.10	2.07	-0.66	-1.29	-2.56	1.61	1.17	4.16	-4.75	3.81	8.25
2019	33096	33286	31998	31756	32266	34206	35420	38805	37323	38578	38031	39208	7816.00
	5.43	0.57	-3.87	-0.76	1.61	6.01	3.55	9.56	-3.82	3.36	-1.42	3.09	24.90
2020	41000	41397	43000	44906	46654	48762	53445	51701	50334	50699	47918	50151	10943.00
	4.57	0.97	3.87	4.43	3.89	4.52	9.60	-3.26	-2.64	0.73	-5.49	4.66	27.91
2021	49096	45736	44935	46737	49349	46839	48001	47120	46521	47635	47805	48099	-2052.00
	-2.10	-6.84	-1.75	4.01	5.59	-5.09	2.48	-1.84	-1.27	2.39	0.36	0.61	-4.09
2022	47632	50760	52166	51754									3655.00
	-0.97	6.57	2.77	-0.79									7.60
Average	2.81	0.97	-0.97	1.26	-0.18	1.06	1.87	4.50	-3.00	0.62	-2.49	0.80	Average

SILVER PRICE MOVEMENT SINCE 2012

Year	JAN	FEB	MAR	APR	MAY	JUN	JUL	AUG	SEP	OCT	NOV	DEC	Growth
2012	56422	57783	56790	56482	54110	51987	53974	58408	62780	59881	61185	57864	6835.00
	10.57	2.41	-1.72	-0.54	-4.20	-3.92	3.82	8.22	7.49	-4.62	2.18	-5.43	13.39
2013	57849	53267	53072	44833	43616	40208	41520	53212	49248	48431	44274	43833	-14031.00
	-0.03	-7.92	-0.37	-15.52	-2.71	-7.81	3.26	28.16	-7.45	-1.66	-8.58	-1.00	-24.25
2014	43309	46362	42805	41329	40851	44114	44399	42255	38516	35797	34527	35990	-7843.00
	-1.20	7.05	-7.67	-3.45	-1.16	7.99	0.65	-4.83	-8.85	-7.06	-3.55	4.24	-17.89
2015	38105	36716	37169	36415	38349	35536	34025	34581	34547	36490	33480	33299	-2691.00
	5.88	-3.65	1.23	-2.03	5.31	-7.34	-4.25	1.63	-0.10	5.62	-8.25	-0.54	-7.48
2016	34750	36081	36751	41566	38400	43467	47480	43988	45726	42402	40089	39485	6186.00
	4.36	3.83	1.86	13.10	-7.62	13.20	9.23	-7.35	3.95	-7.27	-5.45	-1.51	18.58
2017	41921	43247	42326	39503	40096	38344	38645	39798	39457	38818	37532	39000	-485.00
	6.17	3.16	-2.13	-6.67	1.50	-4.37	0.78	2.98	-0.86	-1.62	-3.31	3.91	-1.23
2018	39319	38246	38322	38642	39904	39228	38321	37482	38577	38050	36025	38821	-179.00
	0.82	-2.73	0.20	0.84	3.27	-1.69	-2.31	-2.19	2.92	-1.37	-5.32	7.76	-0.46
2019	40439	39760	37761	37714	36449	37452	41227	46776	44119	46764	44506	46711	7890.00
	4.17	-1.68	-5.03	-0.12	-3.35	2.75	10.08	13.46	-5.68	6.00	-4.83	4.95	20.32
2020	46989	43979	39520	41390	50118	50364	64984	70437	59919	60865	60222	68105	21394.00
	0.60	-6.41	-10.14	4.73	21.09	0.49	29.03	8.39	-14.93	1.58	-1.06	13.09	45.80
2021	69706	67261	63814	68366	71898	69074	67847	63366	59617	64534	62287	62660	-5445.00
	2.35	-3.51	-5.12	7.13	5.17	-3.93	-1.78	-6.60	-5.92	8.25	-3.48	0.60	-8.00
2022	60976	65901	67487	64349									1689.00
	-2.69	8.08	2.41	-4.65									2.70
Average	2.82	-0.12	-2.41	-0.65	1.73	-0.46	4.85	4.19	-2.94	-0.21	-4.17	2.61	Average

GENERAL DISCLAIMERS

KEDIA ADVISORY

This Report is prepared and distributed by Kedia Stocks & Commodities Research Pvt Ltd. for information purposes only. The recommendations, if any, made herein are expression of views and/or opinions and should not be deemed or construed to be neither advice for the purpose of purchase or sale through KSCRPL nor any solicitation or offering of any investment /trading opportunity. These information / opinions / views are not meant to serve as a professional investment guide for the readers. No action is solicited based upon the information provided herein. Recipients of this Report should rely on information/data arising out of their own investigations. Readers are advised to seek independent professional advice and arrive at an informed trading/investment decision before executing any trades or making any investments. This Report has been prepared on the basis of publicly available information, internally developed data and other sources believed by KSCRPL to be reliable. KSCRPL or its directors, employees, affiliates or representatives do not assume any responsibility for, or warrant the accuracy, completeness, adequacy and reliability of such information / opinions / views. While due care has been taken to ensure that the disclosures and opinions given are fair and reasonable, none of the directors, employees, affiliates or representatives of KSCRPL shall be liable for any direct, indirect, special, incidental, consequential, punitive or exemplary damages, including lost profits arising in any way whatsoever from the information / opinions / views contained in this Report. The possession, circulation and/or distribution of this Report may be restricted or regulated in certain jurisdictions by appropriate laws. No action has been or will be taken by KSCRPL in any jurisdiction (other than India), where any action for such purpose(s) is required. Accordingly, this Report shall not be possessed, circulated and/ or distributed in any such country or jurisdiction unless such action is in compliance with all applicable laws and regulations of such country or jurisdiction. KSCRPL requires such recipient to inform himself about and to observe any restrictions at his own expense, without any liability to KSCRPL. Any dispute arising out of this Report shall be subject to the exclusive jurisdiction of the Courts in India.

For more details, please **contact:**

 +91 9323406035 / 9619551022

 info@kediaadvisory.com

 www.kediaadvisory.com

KEDIA STOCKS & COMMODITIES RESEARCH PVT LTD.
Mumbai, IN.

SEBI REGISTRATION NUMBER - INH000006156

